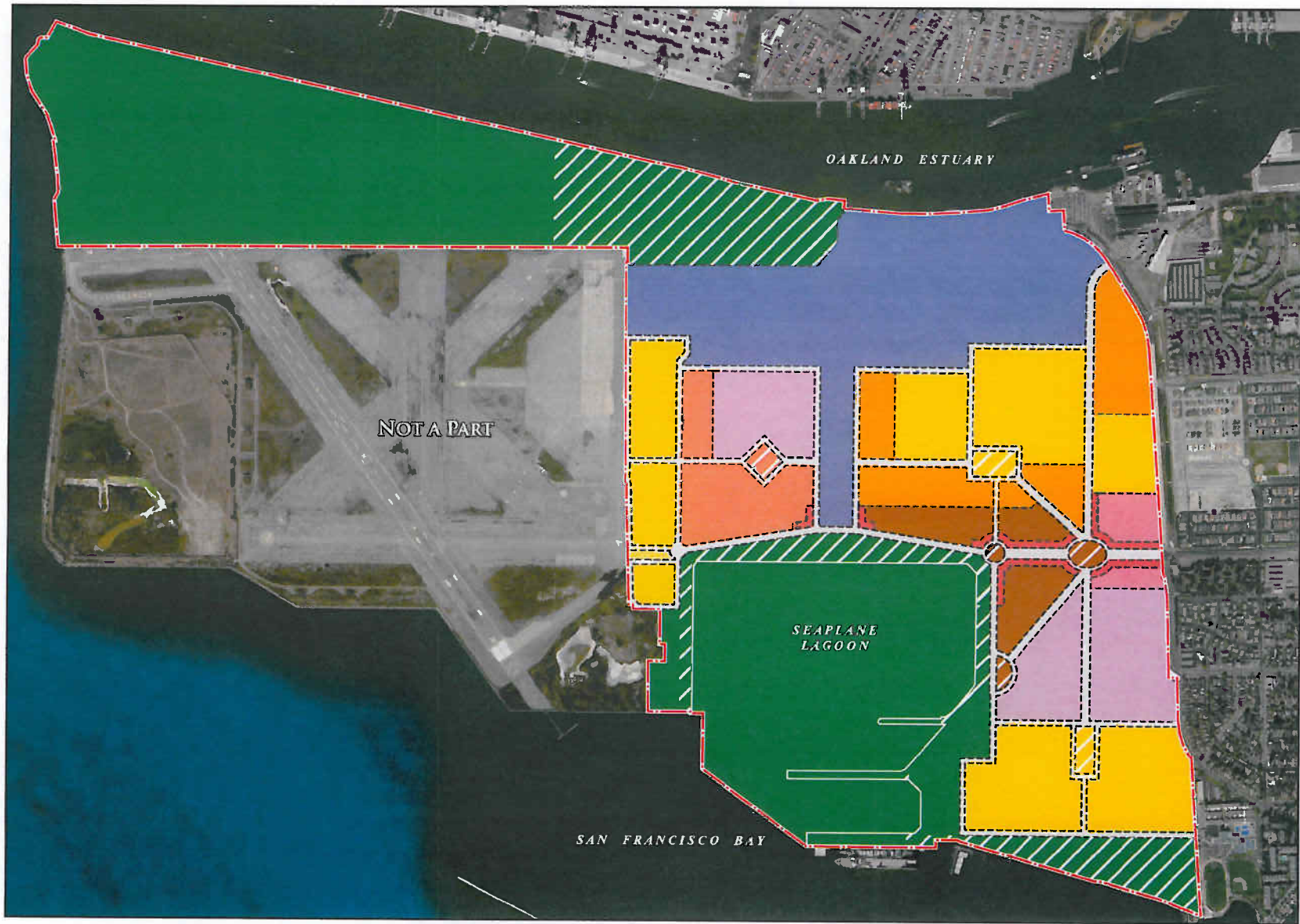


--- Plan Area Boundary



Figure 11-1  
**Alameda Point Plan Area**

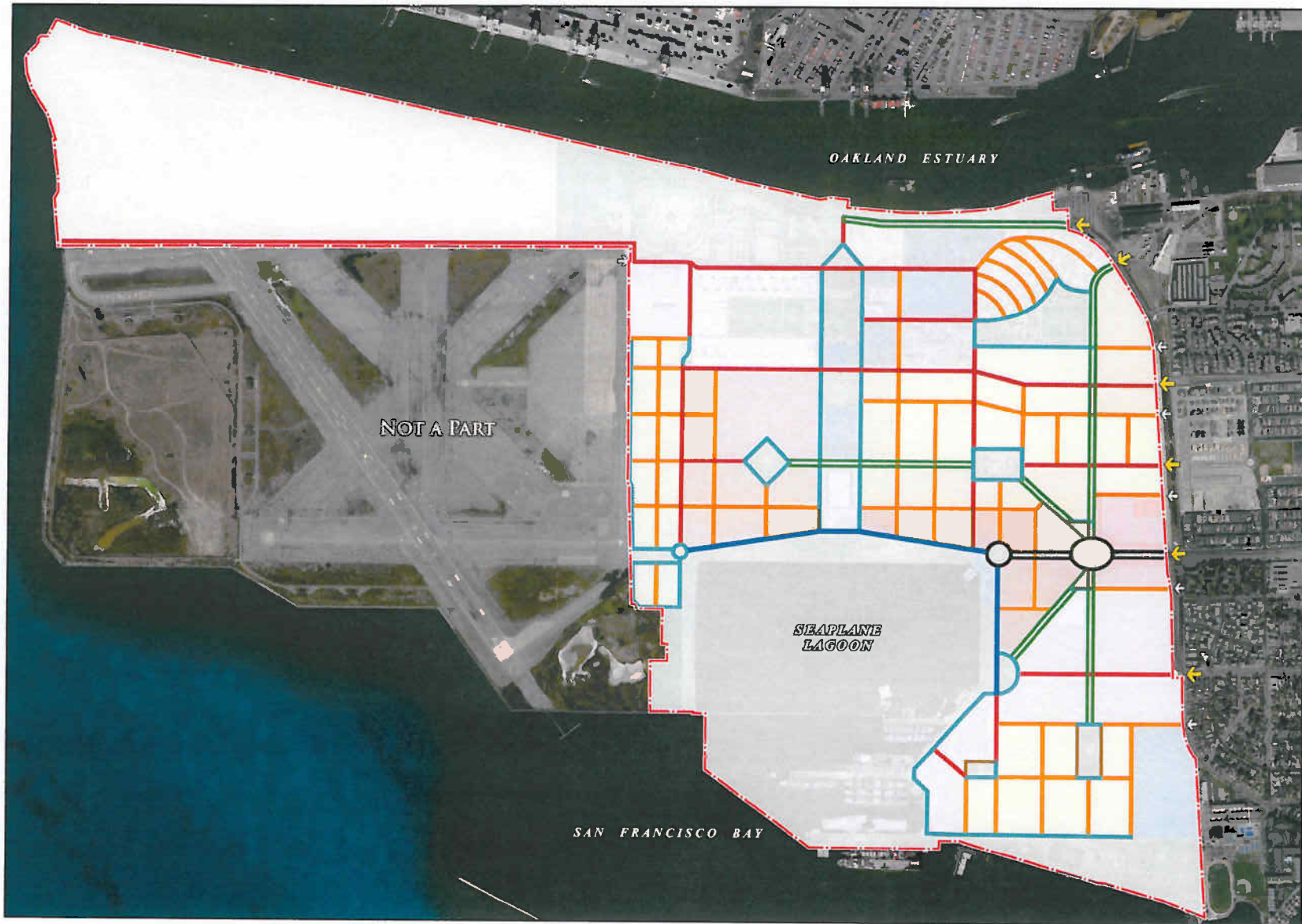


- Plan Area Boundary
- AP-PMU: Preservation Mixed Use
- AP-MU: Mixed Use
- AP-RM: Residential Medium
- AP-RMH: Residential Medium High
- AP-RH: Residential High
- AP-C: Commercial

- AP-BP: Business Park
- AP-PT: Public Trust
- Ground Floor Retail
- Future Park Dedication



*Figure 11-2*  
**Alameda Point General Plan Land Use**



	Plan Area Boundary		West Atlantic Avenue	ROW	120'
	Primary Street Access		Typical Boulevard		86'
	Secondary Street Access		Waterfront Parkway		48'
			Connector Street		60'
			Local Street *		55'
			Connector Street at Open Space		50'
			One Way Local Street at Open Space		38'
			Alley		20'

\* Roadway widths subject to revision in the Big Whites area

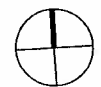
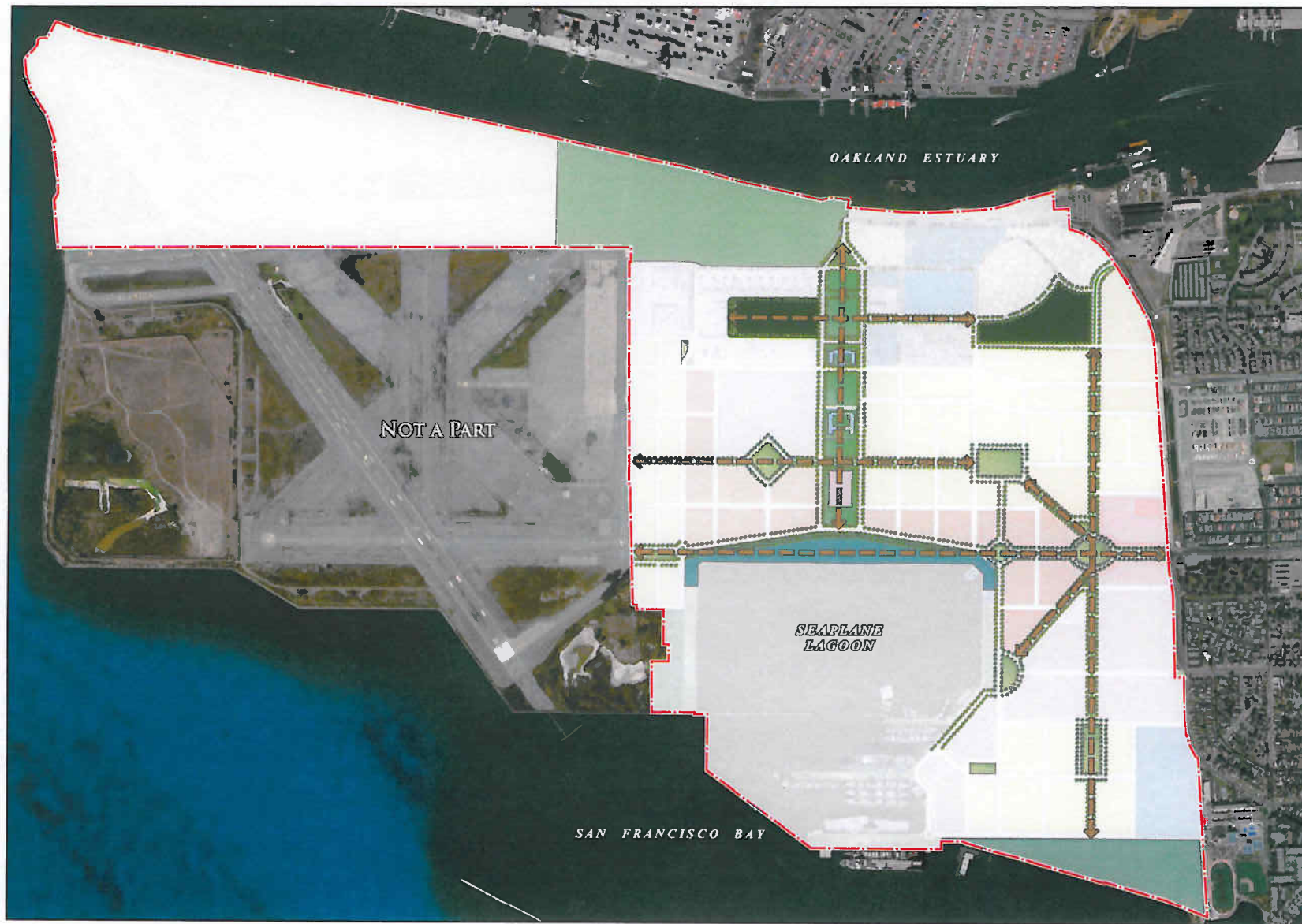


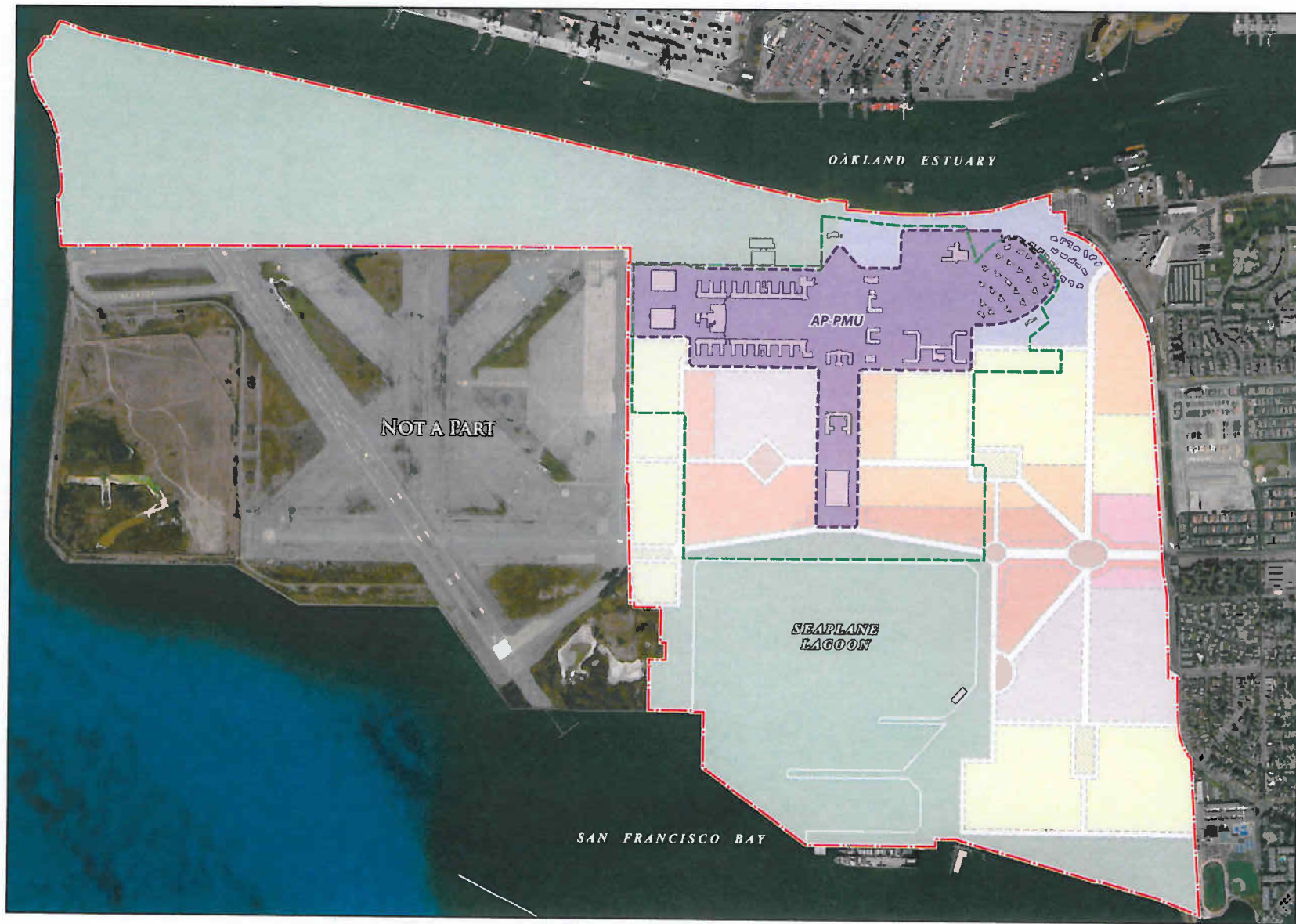
Figure 11-3  
**Alameda Point Circulation Plan**



- - - Plan Area Boundary
- Sports Complex
- Community Park
- Linear Park
- Neighborhood Park
- Seaplane Lagoon Waterfront Park
- Regional Park
- ➔ View Corridor



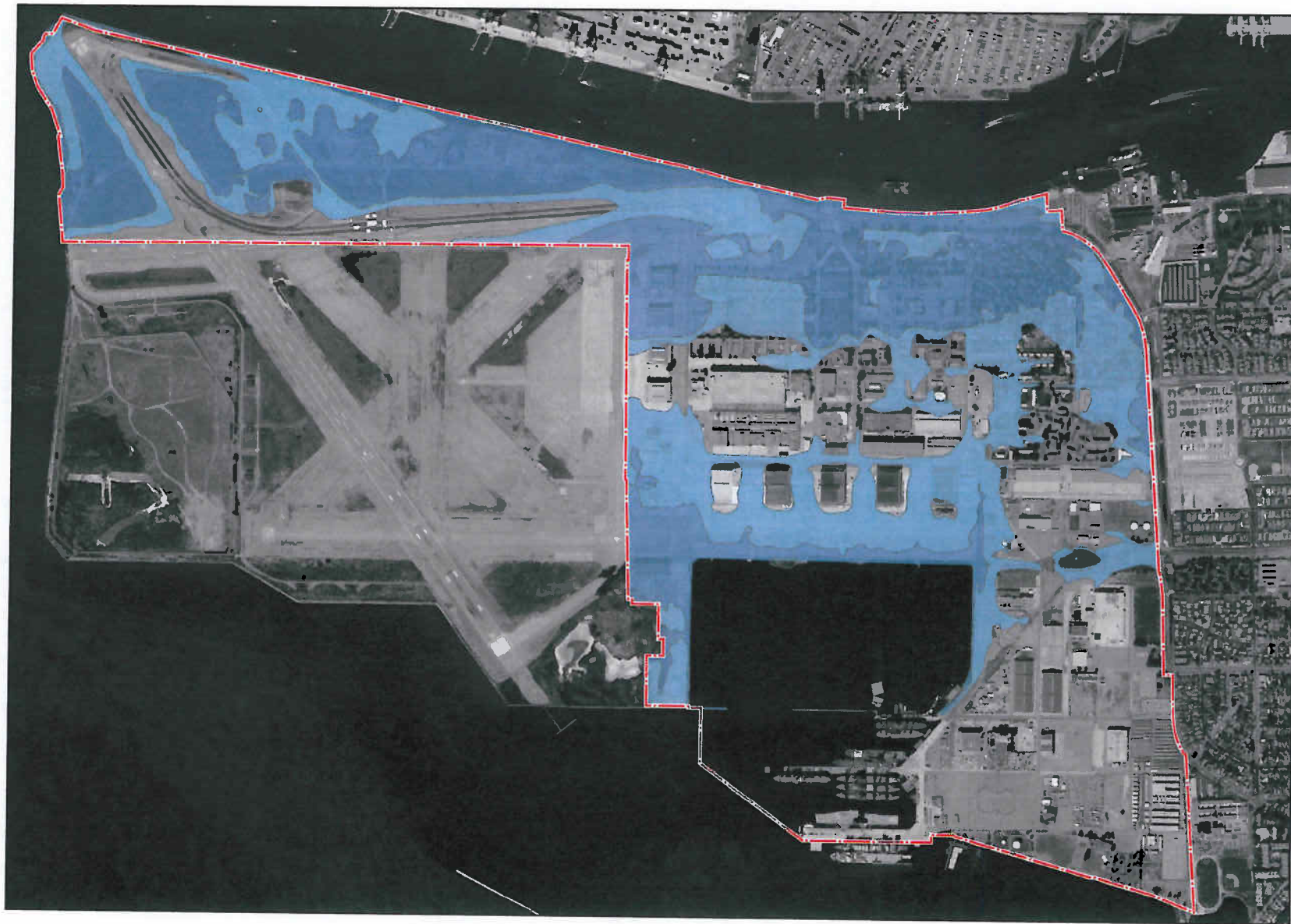
*Figure 11-4*  
**Alameda Point Parks And Open Space**






- - - Plan Area Boundary
- - - AP-Preservation Mixed Use district
- - - Local Historic District



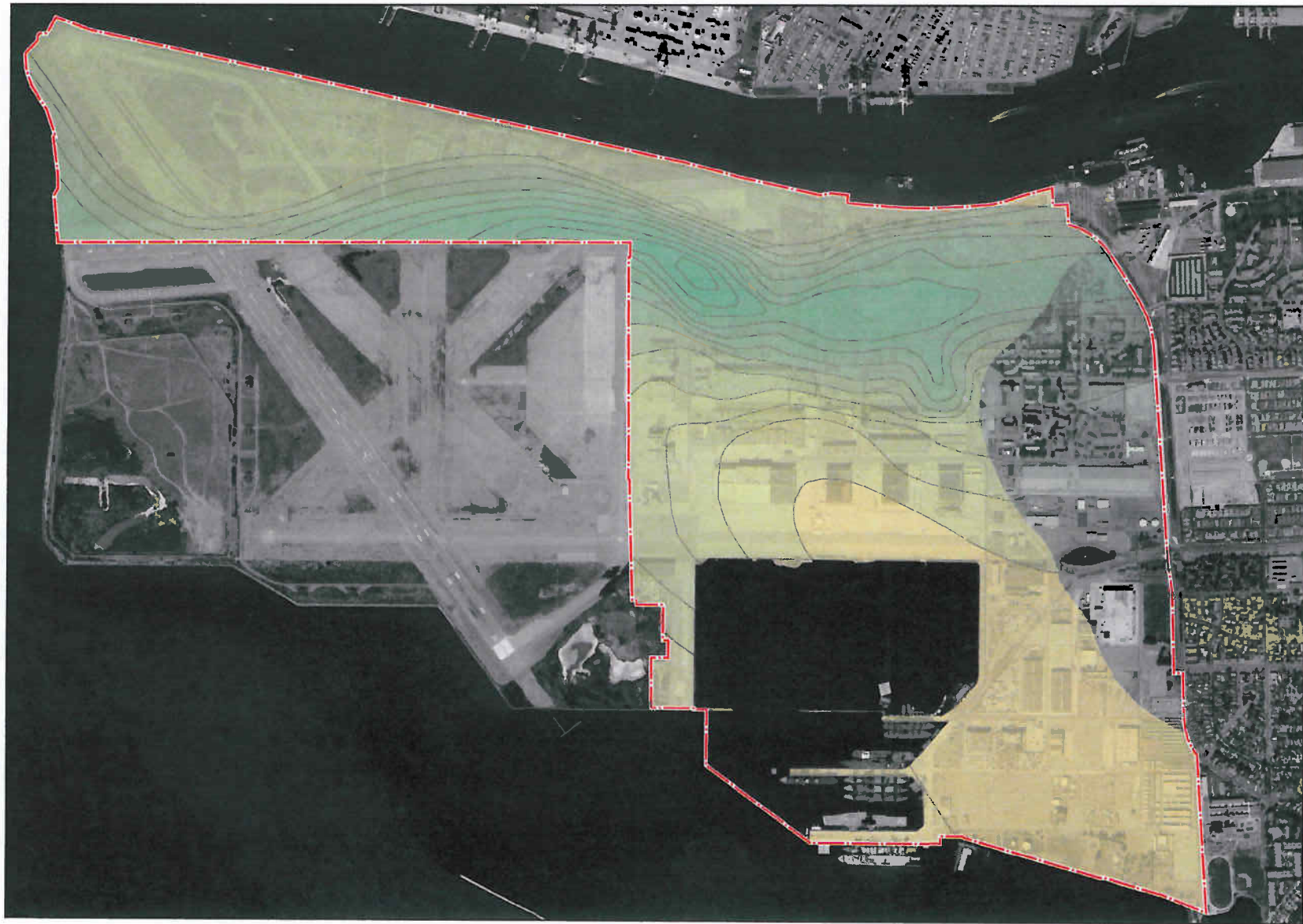
*Figure 11-5*  
**Alameda Point Historic Resources**






-  Plan Area Boundary
-  100-Year Floodplain
-  18" Rise in Sea Level



*Figure 11-6*  
**Alameda Point Floodplains and Sea Level Rise**



-  Plan Area Boundary
-  Young Bay Mud
-  Area at Risk of Liquefaction



*Figure 11-7*  
**Alameda Point Geotechnical Conditions**